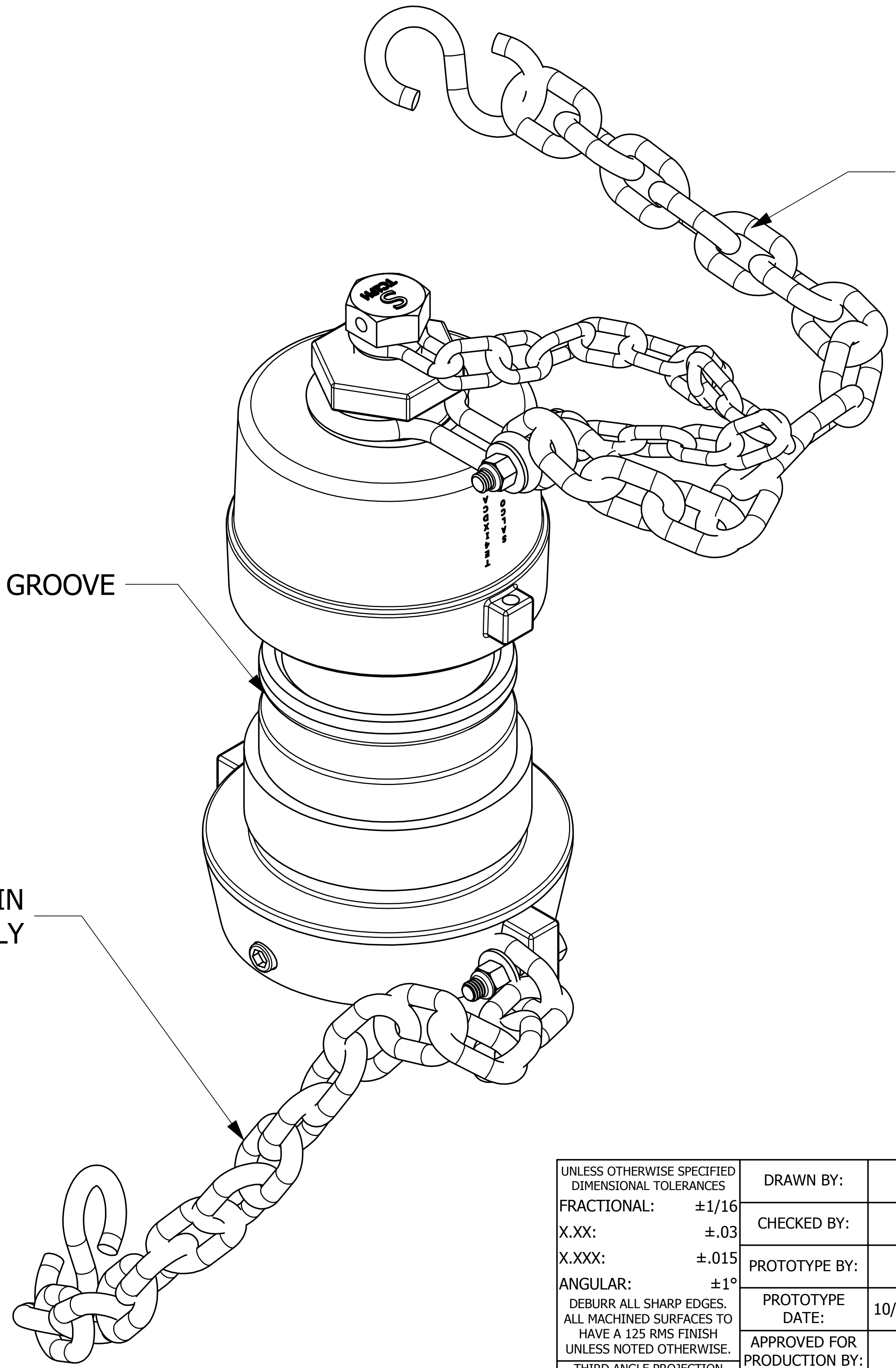


SALES DRAWING

SALES DRAWING



15 LINKS 3/8" CHAIN  
LENGTH 21" APPROXIMATELY

4" CAM GROOVE

15 LINKS 3/8" CHAIN  
LENGTH 21" APPROXIMATELY

NOTES:

- 1. APPROXIMATE HEIGHT = 8"
- 2. 5-1/4" - 4 UN 2B THREADS CONFORM TO ANSI B1.1 STANDARD AND FIGURE E18 FROM AAR TANK CAR MANUAL.
- 3. AAR APPROVAL # E-149523.
- 4. THIS ASSEMBLY IS AAR AND DOT APPROVED.
- 5. GASKET MATERIAL IS BLACK NITRILE

D	WEB	2-13-15	AAR# WAS E-049013, A-A-59326D WAS MIL-C-27487G
C	GDS	1-4-13	UPDATED TO 3D DRAWING STANDARDS
B	WRB	1-18-05	AA APPROVAL # WAS E-949047 UPDATED DWG TO CURRENT DRAWING STANDARDS
A	ACC	12-9-99	CHANGED BOM TO SUB-ASSEMBLIES
REV	BY	DATE	DESCRIPTION

UNLESS OTHERWISE SPECIFIED DIMENSIONAL TOLERANCES FRACTIONAL: ±1/16 X.XX: ±.03 X.XXX: ±.015 ANGULAR: ±1° DEBURR ALL SHARP EDGES. ALL MACHINED SURFACES TO HAVE A 125 RMS FINISH UNLESS NOTED OTHERWISE. THIRD ANGLE PROJECTION	DRAWN BY:	ACC
	CHECKED BY:	
	PROTOTYPE BY:	ACC
	PROTOTYPE DATE:	10/20/1999
	APPROVED FOR PRODUCTION BY:	ACC
	PRODUCTION DATE:	10/20/1999

<b>SALCO PRODUCTS, INC.</b>	
PART NAME: <b>QUICK CONNECT 4" THREAD ON</b>	
MATERIAL: <b>DUCTILE IRON</b>	
PROJECT #:	SHEET #: <b>1 OF 1</b>
DRAWING #: <b>D13844</b>	PART #: <b>TE4IU1A</b>
SCALE: <b>3:4</b>	

THIS PRINT, PROPERTY OF SALCO PRODUCTS INC. CONTAINS PROPRIETARY INFORMATION AND MUST NOT BE COPIED, REPRODUCED, OR USED DETRIMENTALLY TO OUR INTEREST.